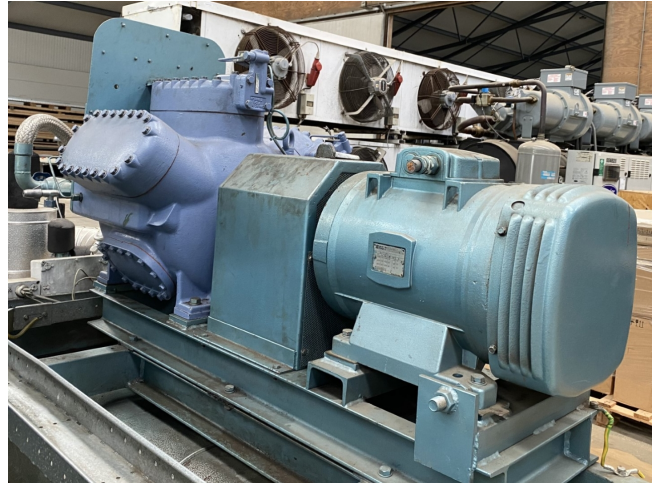


## Grasso RC 66

### Specifications

Marque	Grasso
Le type	RC 66
Réfrigérant	Freon
kW at +10°C/+40°C	233,7
kW at 0°C/+40°C	159,7
kW at -5°C/+40°C	129,6
kW at -10°C/+40°C	103,5
kW at -20°C/+40°C	62,1
kW at -30°C/+40°C	33,0
Électromoteur Specs	380/400/415 V - 50 Hz - 30 kW - 1440/1450/1455 RPM
Sur le châssis en acier	✓
Interrupteurs de sécurité de pression	✓
Manomètres	✓
Voyant	✓
m <sup>3</sup> / h	202
Remarques	Y.o.b. 2006
Stock	1



### Description

#### Used Grasso RC 66

Used Grasso RC 66 reciprocating compressor on Freon. Complete with a Leroy-Somer PLS180L-T electric motor - 50 Hz - 30 kW - 1440 RPM, pressure and safety switches/gauges. The compressor has a displacement of 202 m<sup>3</sup>/h.

\*Why choose for HOSBV? Were not only the largest used refrigeration specialist in Europe, but also, we deliver all equipment including an extensive test, warranty and industrial cleaning.

\*Optional we can also perform a new paint job and arrange the logistics.

